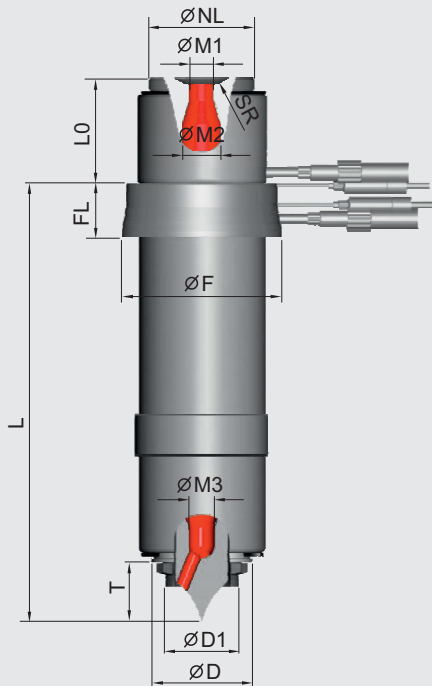


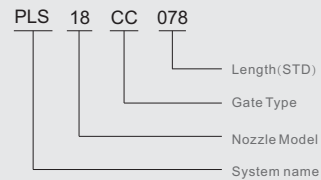
PLS SERIES
SINGLE OPEN NOZZLES

Open System Introduction

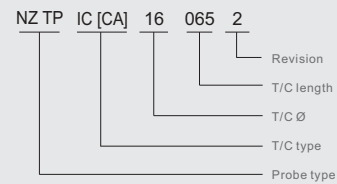
PLS SERIES



How to read Nozzle Model



How to read Thermocouple Code



How to read Heater Code



Division	PLS18	PLS25	PLS35	PLS45
Model Number	PLS 18-□□-□□□	PLS 25-□□-□□□	PLS 35-□□-□□□	PLS 45-□□-□□□
Injection Volume	UP to 250gr	UP to 650gr	UP to 1400gr	Over 1900gr
SR	Ask us	Ask us	Ask us	Ask us
Ø M1	4	6	8	8
Ø M2	8	10	12	16
Ø M3	5	7	9	13
L0	40	40	45	45
L	CC,CE,CH,CW,CL	65~485	75~555	85~505
	SL	55~175	55~475	60~540
Ø NL	25	35	45	45
Ø D	18.15	25.15	35.15	45.15
Ø D1	13	18	26	34
FL	20	20	23	25
T	11	16	21	26
Ø F	38	48	58	68
Tube Heater	TH OS 18□□□6 36 5	TH OS 25□□□4 36 5	TH OS 35□□□5 36 5	TH OS 45□□□8 36 5
Thermocouple	NZ TP□□ 16□□ 5 R	NZ TP□□ 16□□ 5 2	NZ TP□□ 16□□ 5 2	NZ TP□□ 16□□ 5 2

Open System Introduction

GATING TYPE



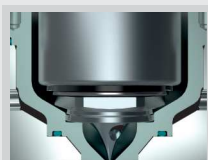
CC TYPE



CH TYPE



CE TYPE



CW TYPE



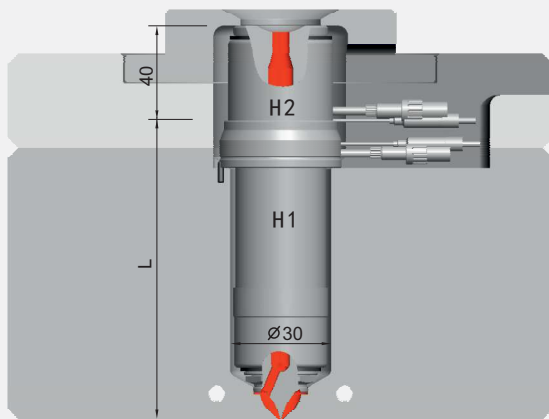
SL TYPE



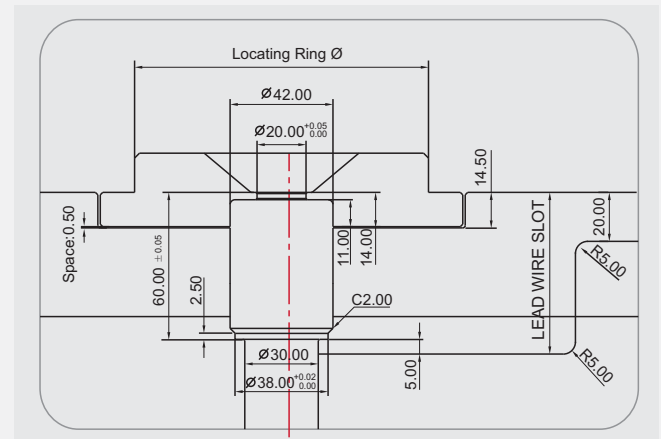
CL TYPE

Open System Introduction

PLS 18 SERIES



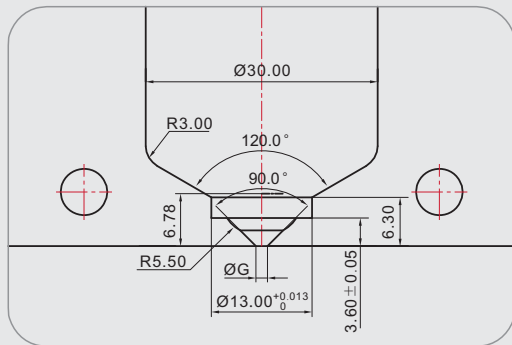
FLANGE PROCESS AREA



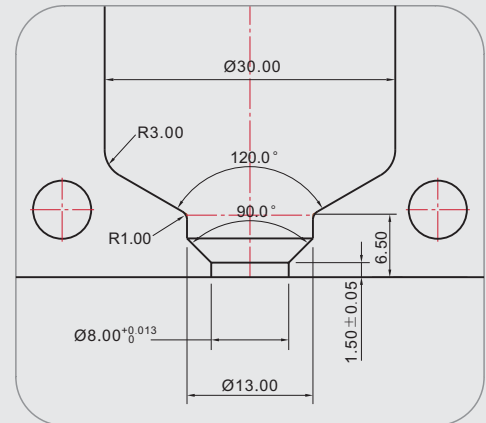
MODEL	L	HEATER H1	T/C H1	HEATER H2	T/C H2
PLS 18 □□	060	THOS 18 036 36 5	NZ TP IC [CA] 16 065 R		
PLS 18 □□	070	THOS 18 046 36 5			
PLS 18 □□	080	THOS 18 056 36 5	NZ TP IC [CA] 16 085 R		
PLS 18 □□	090	THOS 18 066 36 5			
PLS 18 □□	100	THOS 18 076 36 5	NZ TP IC [CA] 16 105 R		
PLS 18 □□	110	THOS 18 086 36 5			
PLS 18 □□	120	THOS 18 096 36 5	NZ TP IC [CA] 16 125 R	THOS 25 034 365	NZ TP IC [CA] 16 65 R
PLS 18 □□	130	THOS 18 106 36 5			
PLS 18 □□	140	THOS 18 116 36 5	NZ TP IC [CA] 16 145 R		
PLS 18 □□	150	THOS 18 126 36 5			
PLS 18 □□	160	THOS 18 136 36 5	NZ TP IC [CA] 16 165 R		
PLS 18 □□	170	THOS 18 146 36 5			
PLS 18 □□	180	THOS 18 156 36 5	NZ TP IC [CA] 16 185 R		

Open System Introduction

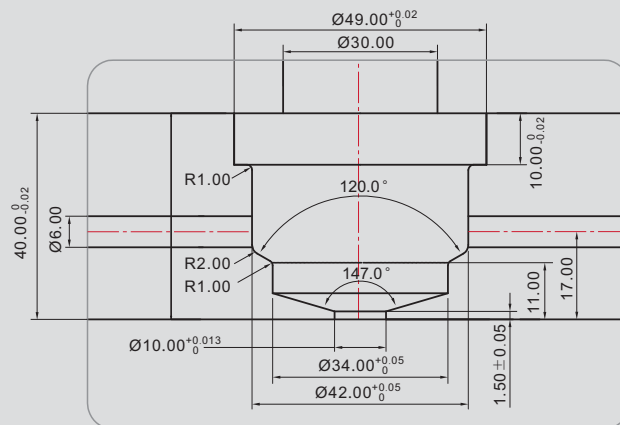
GATE PROCESS AREA



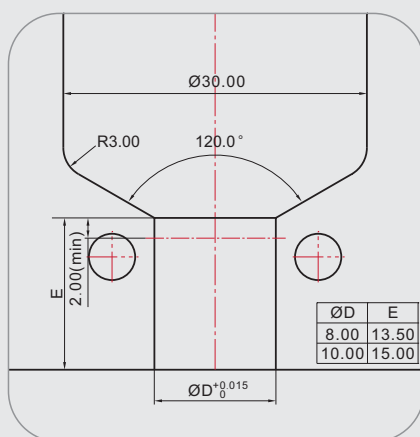
CC,CH



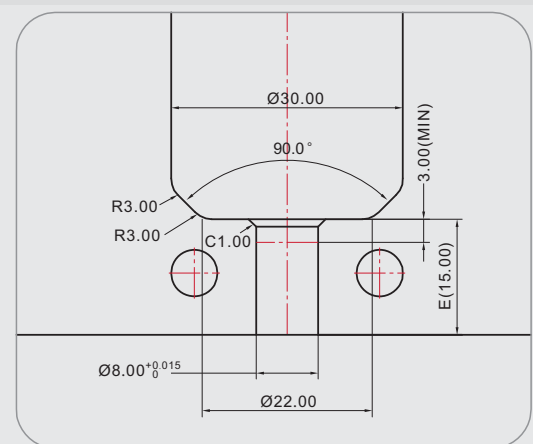
CE



CW



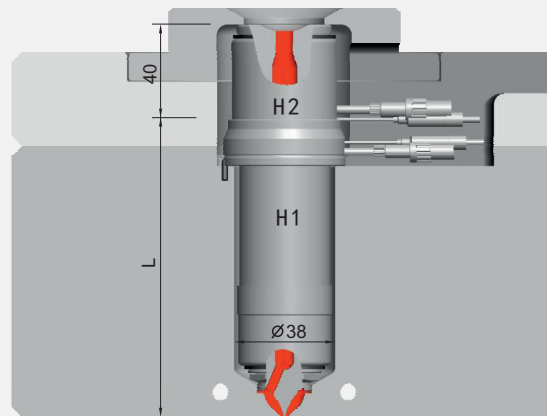
CL



SL

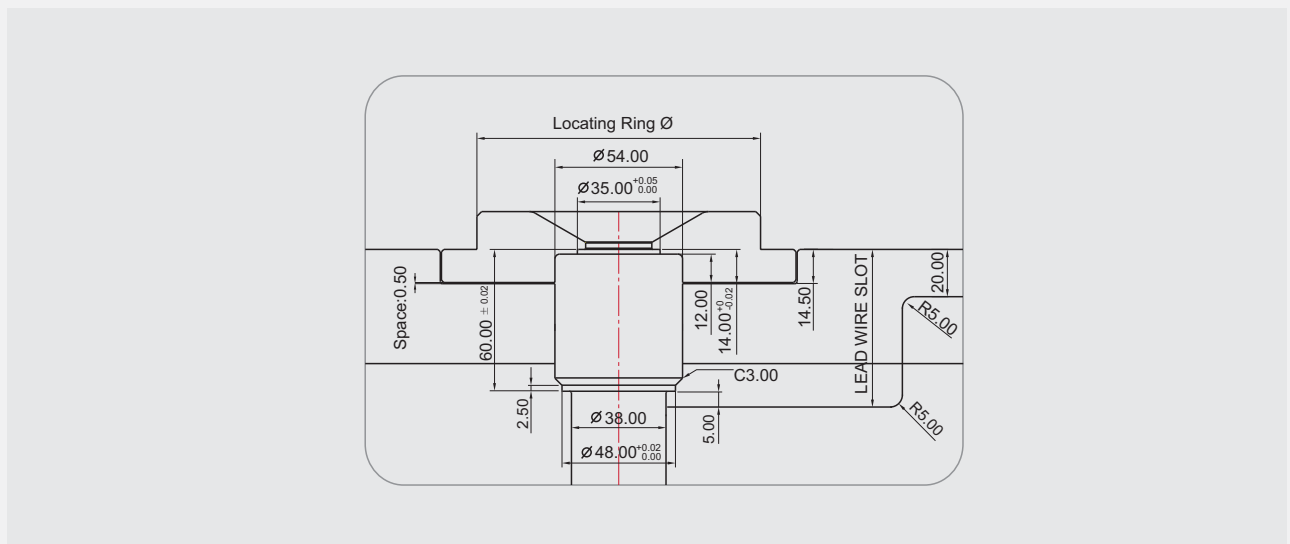
Open System Introduction

PLS 25 SERIES



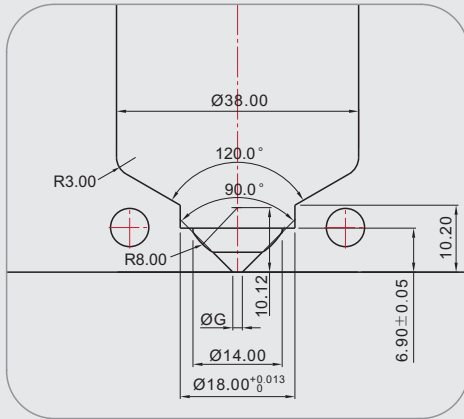
MODEL	L	HEATER H1	T/C H1	HEATER H2	T/C H2
PLS 25□□	065	THOS 25 034 36 5	NZ TP IC [CA] 16 065 2	THOS 35 035 36 5	NZ TP IC [CA] 16 065 2
PLS 25□□	075	THOS 25 044 36 5			
§	§	§	§		
PLS 25□□	245	THOS 25 214 36 5	NZ TP IC [CA] 16 225 2		

FLANGE PROCESS AREA

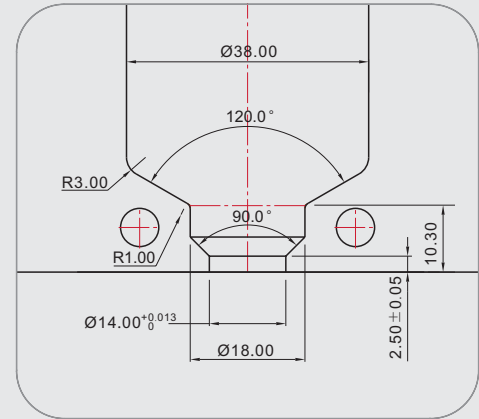


Open System Introduction

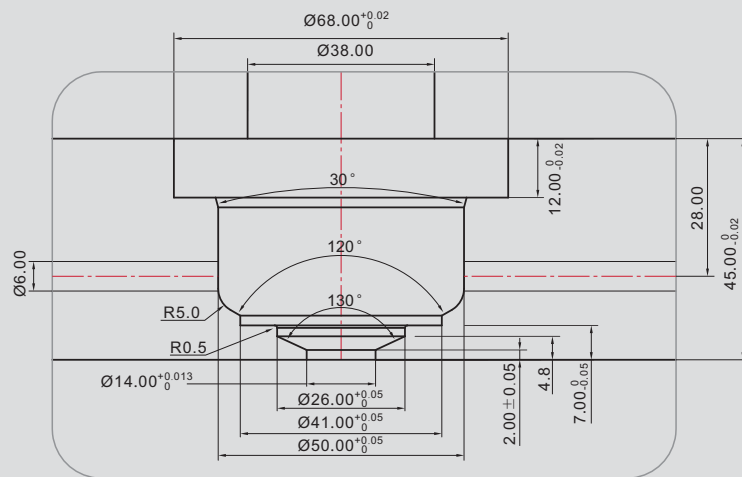
GATE PROCESS AREA



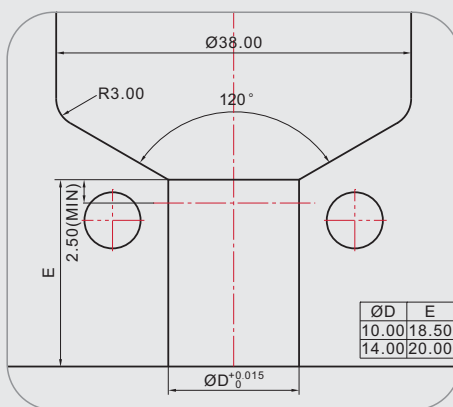
CC / CH



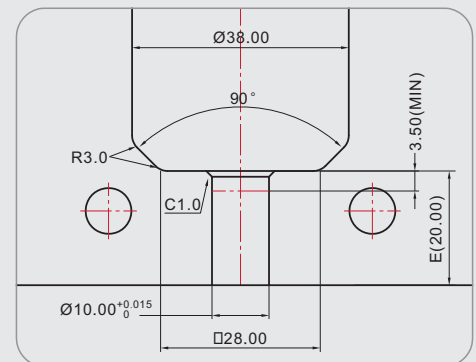
CE



CW



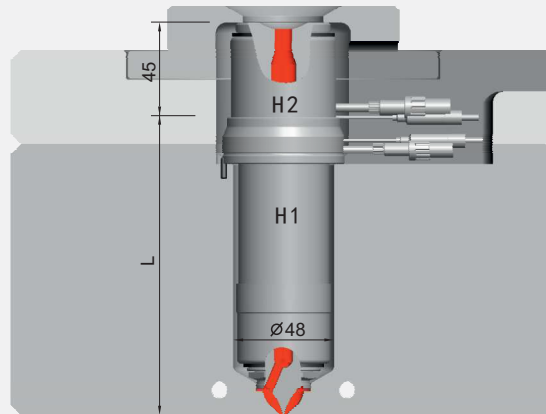
CL



SL

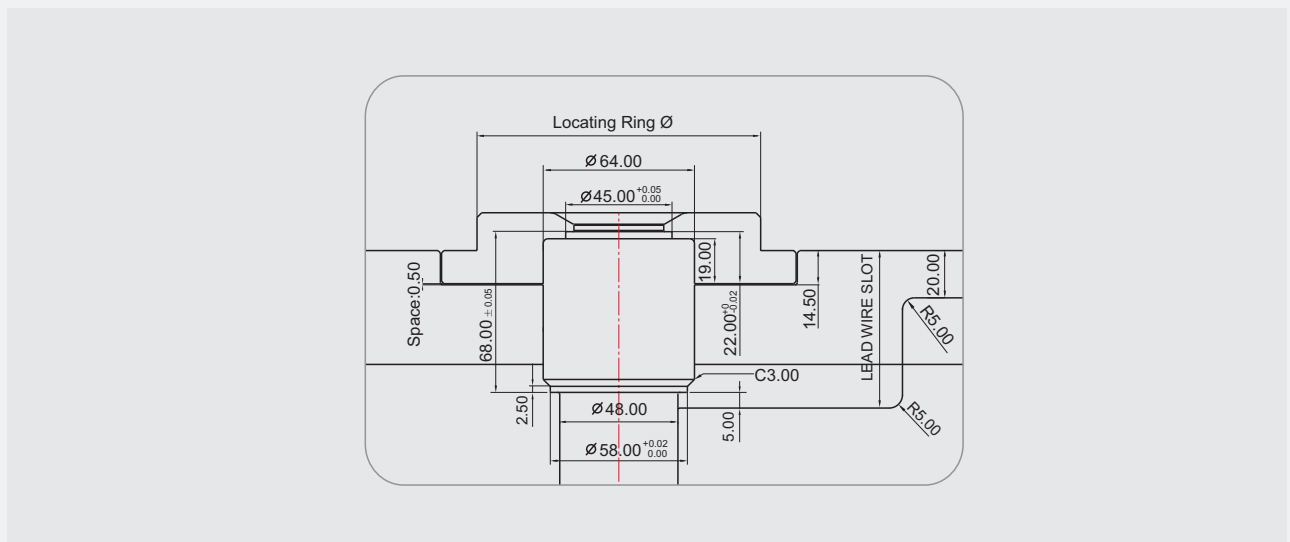
Open System Introduction

PLS 35 SERIES



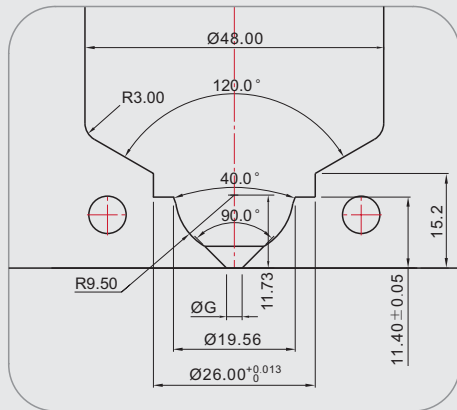
MODEL	L	HEATER H1	T/C H1	HEATER H2	T/C H2
PLS 35 □□	075	THOS 35 035 36 5	NZ TP IC [CA] 16 065 2	THOS 45 038 36 5	NZ TP IC [CA] 16 065 2
PLS 35 □□	085	THOS 35 045 36 5			
§	§	§	§		
PLS 35 □□	265	THOS 35 225 36 5	NZ TP IC [CA] 16 245 2		

FLANGE PROCESS AREA

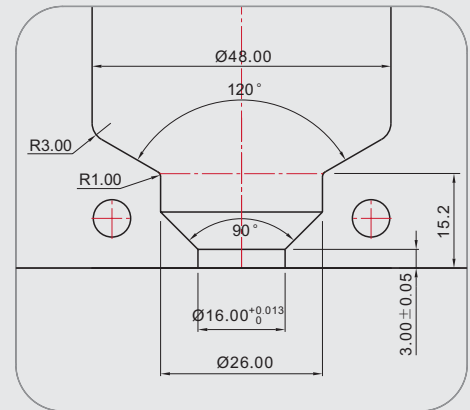


Open System Introduction

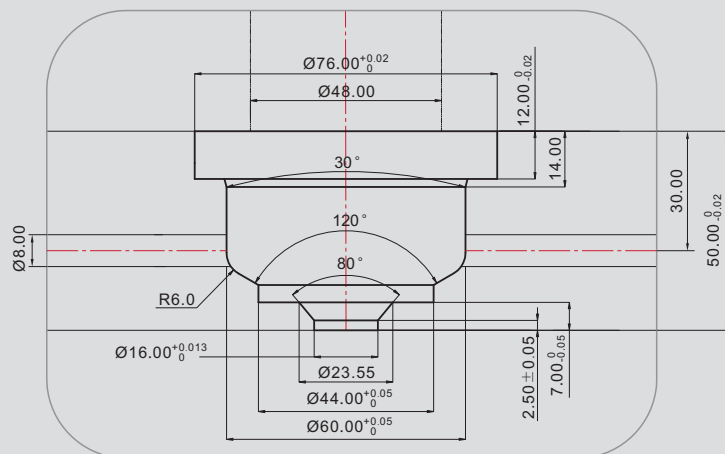
GATE PROCESS AREA



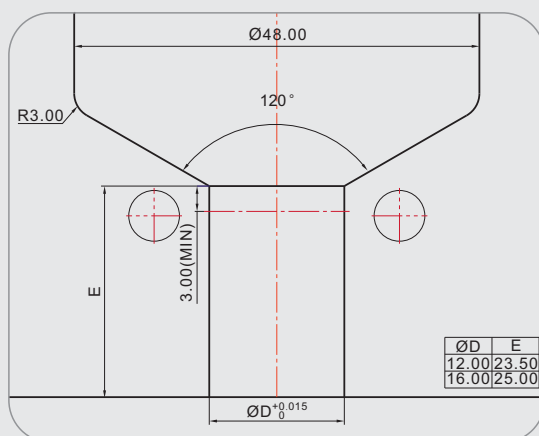
CC / CH



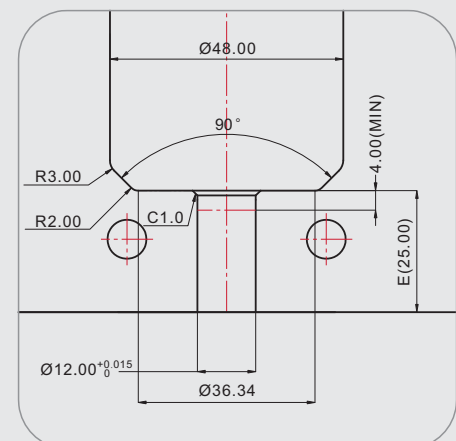
CE



CW



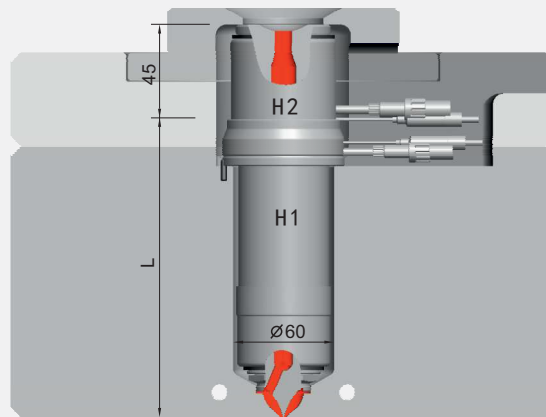
CL



SL

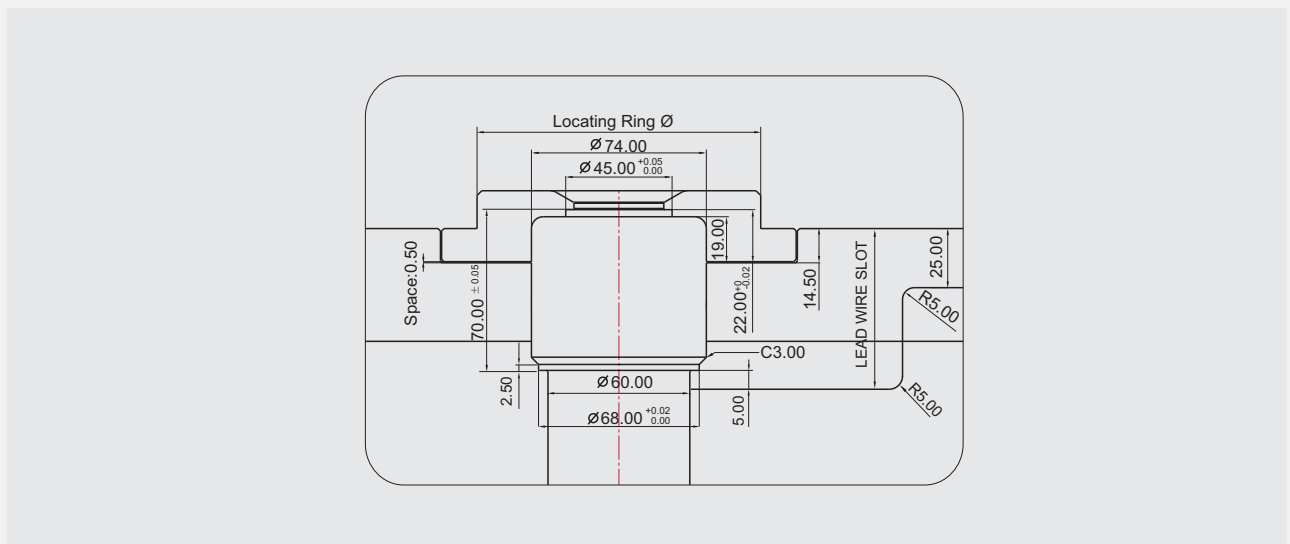
Open System Introduction

PLS 45 SERIES



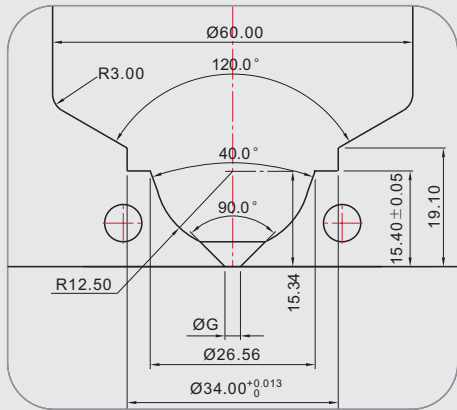
MODEL	L	HEATER H1	T/C H1	HEATER H2	T/C H2
PLS 45 □□	085	THOS 45 038 36 5	NZ TP IC [CA] 16 065 2		
PLS 45 □□	095	THOS 45 048 36 5	NZ TP IC [CA] 16 085 2		
§	§	§	§	THOS 45 038 36 5	NZ TP IC [CA] 16 065 2
PLS 45 □□	285	THOS 45 238 36 5	NZ TP IC [CA] 16 265 2		

FLANGE PROCESS AREA

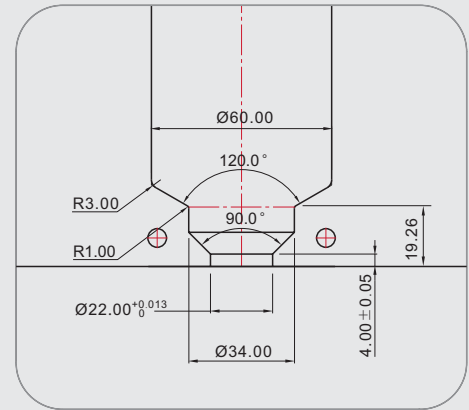


Open System Introduction

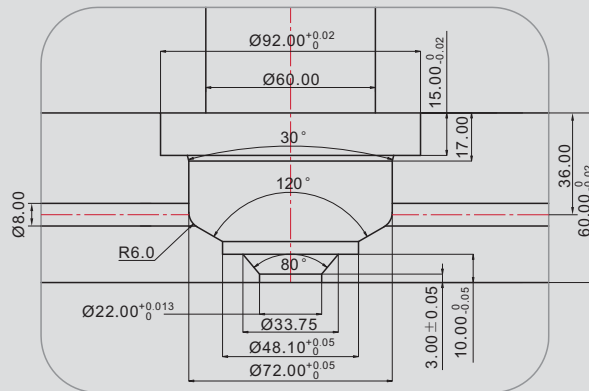
GATE PROCESS AREA



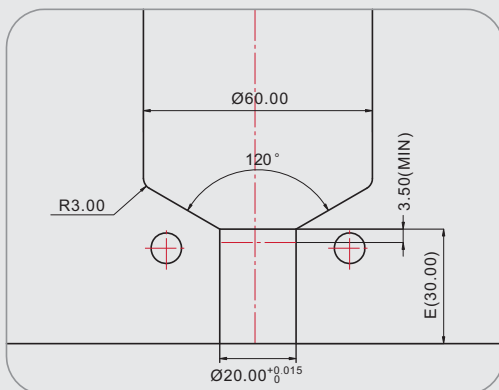
CC / CH



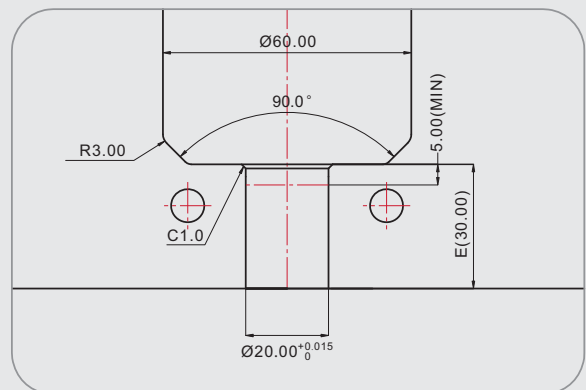
CE



CW



CL



SL



Huelva, 19
03440 - Ibi (Alicante) Spain
Tel.: +34 965 553 199
Fax: +34 966 555 168
info@runner-tech.com
www.runner-tech.com