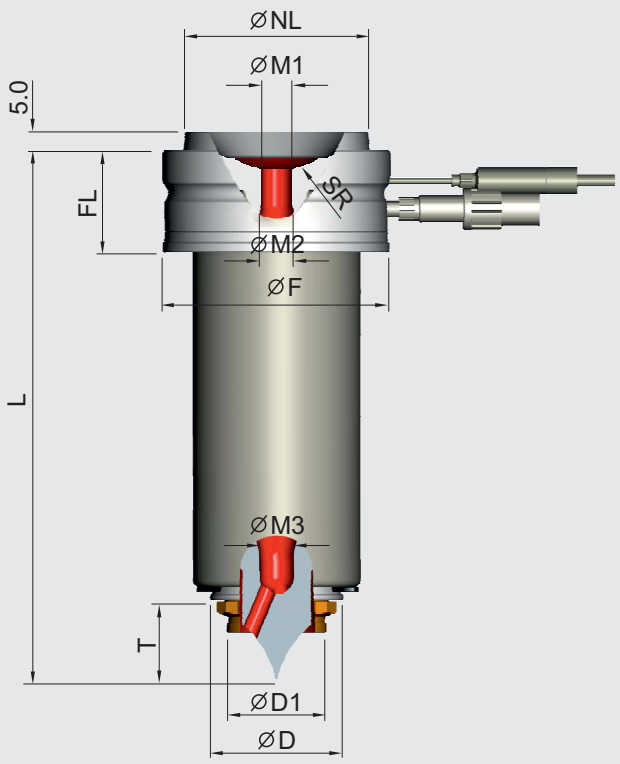


PRS SERIES

SINGLE OPEN NOZZLES

Open System Introduction

PRS SERIES



■ How to read Nozzle Model

PRS 18 CC 078

- PRS: System name
- 18: Length(STD)
- CC: Gate Type
- 078: Nozzle Model

■ How to read Thermocouple Code

NZ TP IC [CA] 16 065 2

- NZ TP: Probe type
- IC [CA]: T/C type
- 16: T/C Ø
- 065: T/C length
- 2: Revision

■ How to read Heater Code

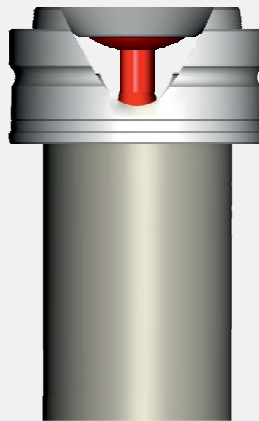
TH OS 45 088 36 4

- TH OS: Heater Type
- 45: Wiring Type
- 088: Nozzle Model
- 36: Heater length
- 4: Heater Thickness
- Revision

| Division | PRS18 | PRS25 | PRS35 | PRS45 |
|------------------|-------------------|-------------------|-------------------|-------------------|
| Model Number | PRS18-□□-□□8 | PRS25-□□-□□3 | PRS35-□□-□□3 | PRS45-□□-□□3 |
| Injection Volume | UP to 80gr | UP to 200gr | UP to 800gr | Over 1000gr |
| SR | Ask us | Ask us | Ask us | Ask us |
| ØM1 | 4 | 6 | 8 | 8 |
| ØM2 | 8 | 10 | 12 | 16 |
| ØM3 | 5 | 7 | 9 | 13 |
| L | CC,CE,CH,CW,CL | 58~178 | 63~243 | 73~263 |
| | SL | 58~178 | 53~233 | 53~233 |
| ØNL | 31 | 39 | 49 | 60 |
| ØD | 18.15 | 25.15 | 35.15 | 45.15 |
| ØD1 | 13 | 18 | 26 | 34 |
| FL | 17 | 22 | 27 | 30 |
| T | 11 | 16 | 21 | 26 |
| ØF | 38 | 48 | 60 | 70 |
| Tube Heater | TH OS 18 □□6□36 4 | TH OS 25 □□4□36 4 | TH OS 35 □□5□36 4 | TH OS 45 □□8□36 4 |
| Thermocouple | NZ TP □□16 □□5 2 | NZ TP □□16 □□5 2 | NZ TP □□16 □□5 2 | NZ TP □□16 □□5 2 |

Open System Introduction

GATING TYPE



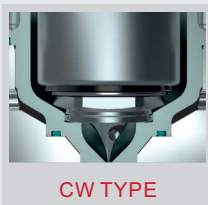
CC TYPE



CH TYPE



CE TYPE



CW TYPE



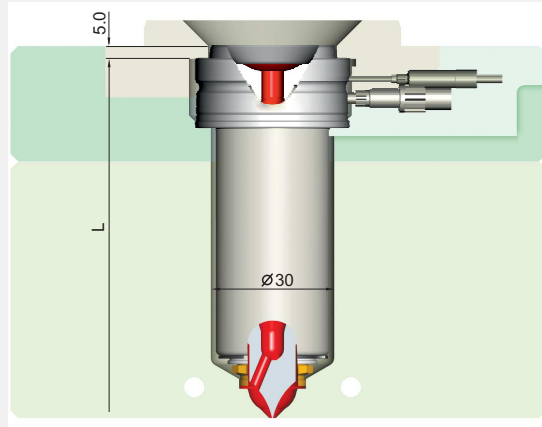
SL TYPE



CL TYPE

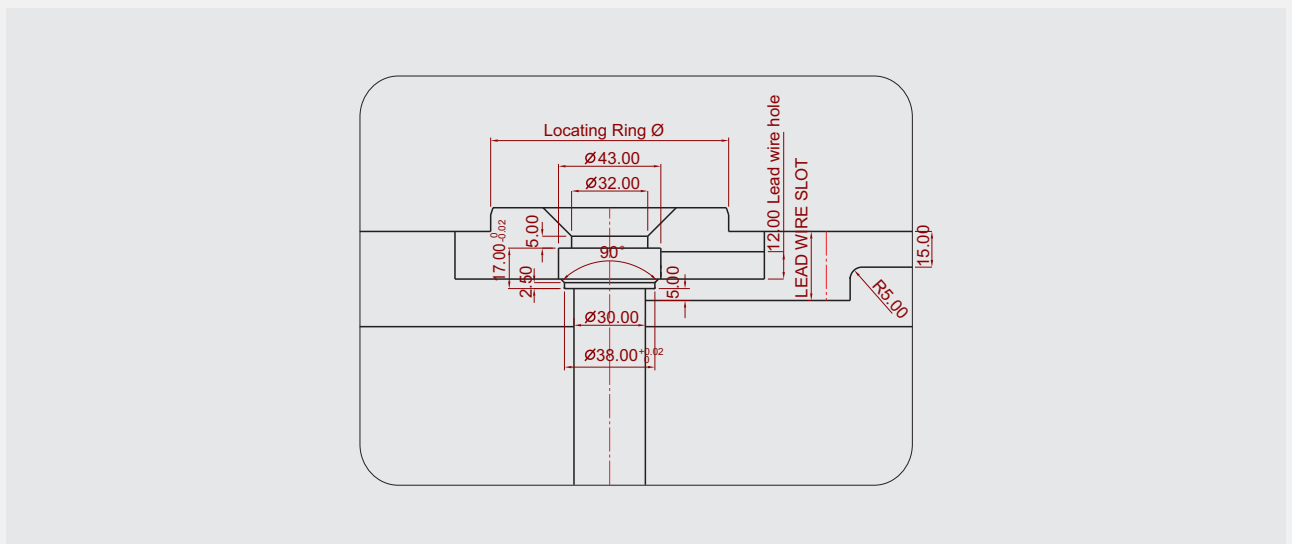
Open System Introduction

PRS18 SERIES



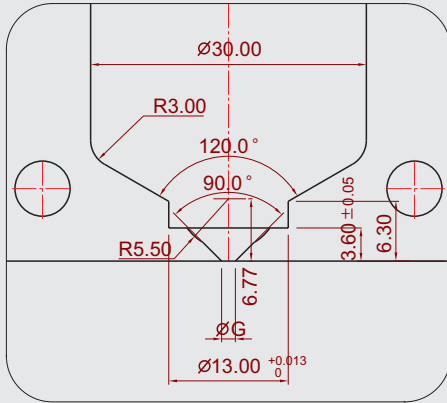
| MODEL | L | HEATER | T/C |
|----------|-----|------------------|------------------------|
| PRS18 □□ | 058 | THOS 18 036 36 4 | |
| PRS18 □□ | 068 | THOS 18 046 36 4 | NZ TP IC [CA] 16 065 2 |
| PRS18 □□ | 078 | THOS 18 056 36 4 | |
| PRS18 □□ | 088 | THOS 18 066 36 4 | NZ TP IC [CA] 16 085 2 |
| PRS18 □□ | 098 | THOS 18 076 36 4 | |
| PRS18 □□ | 108 | THOS 18 086 36 4 | NZ TP IC [CA] 16 105 2 |
| PRS18 □□ | 118 | THOS 18 096 36 4 | |
| PRS18 □□ | 128 | THOS 18 106 36 4 | NZ TP IC [CA] 16 125 2 |
| PRS18 □□ | 138 | THOS 18 116 36 4 | |
| PRS18 □□ | 148 | THOS 18 126 36 4 | NZ TP IC [CA] 16 145 2 |
| PRS18 □□ | 158 | THOS 18 136 36 4 | |
| PRS18 □□ | 168 | THOS 18 146 36 4 | NZ TP IC [CA] 16 165 2 |
| PRS18 □□ | 178 | THOS 18 156 36 4 | |

FLANGE PROCESS AREA

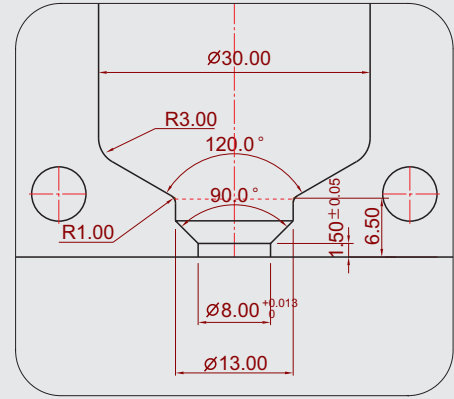


Open System Introduction

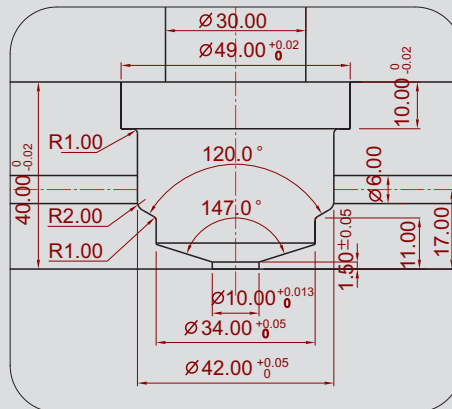
GATE PROCESS AREA



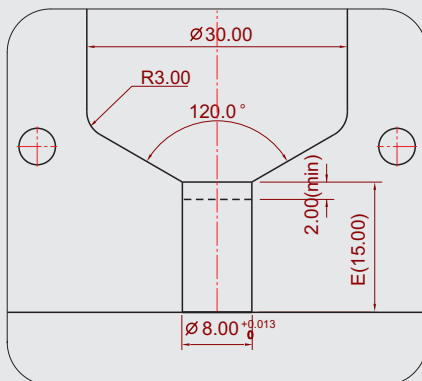
CC / CH



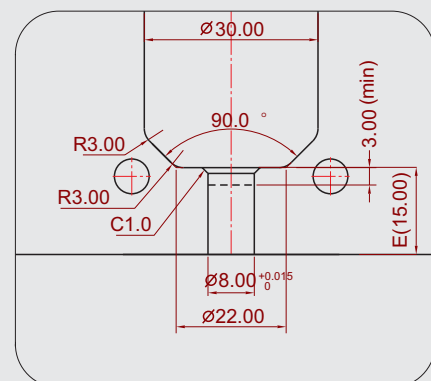
CE



CW



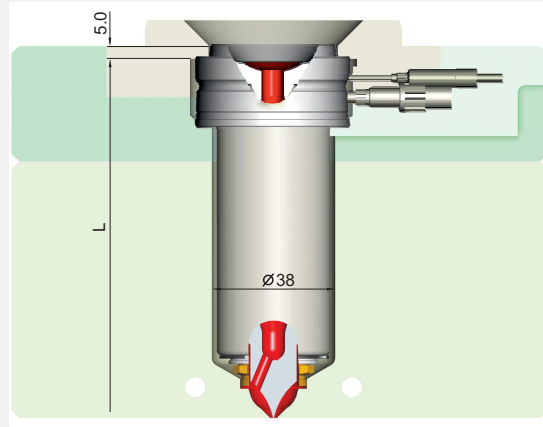
CL



SL

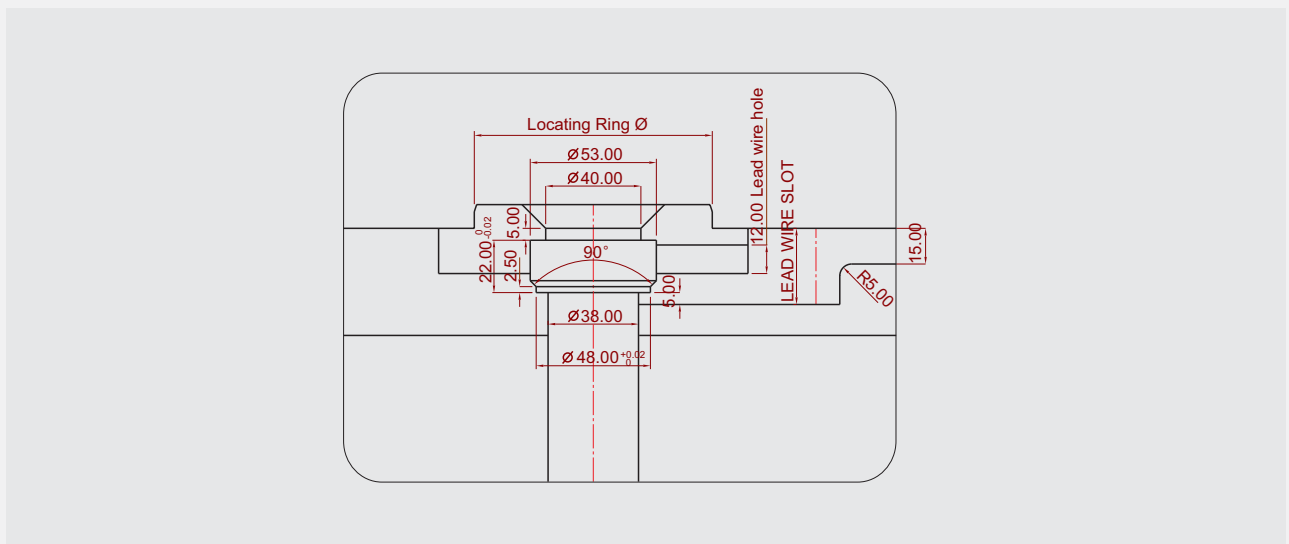
Open System Introduction

PRS25 SERIES



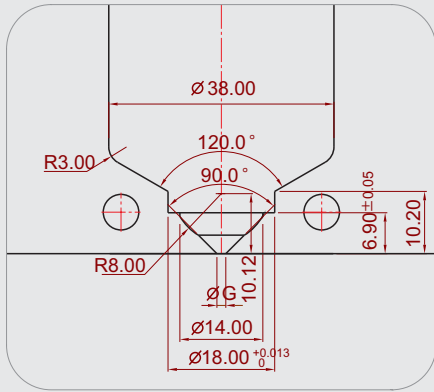
| MODEL | L | HEATER | T/C |
|---------|-----|------------------|------------------------|
| PRS25□□ | 063 | THOS 25 034 36 4 | |
| PRS25□□ | 073 | THOS 25 044 36 4 | NZ TP IC [CA] 16 065 2 |
| PRS25□□ | 083 | THOS 25 054 36 4 | |
| PRS25□□ | 093 | THOS 25 064 36 4 | NZ TP IC [CA] 16 085 2 |
| PRS25□□ | 103 | THOS 25 074 36 4 | |
| PRS25□□ | 113 | THOS 25 084 36 4 | NZ TP IC [CA] 16 105 2 |
| PRS25□□ | 123 | THOS 25 094 36 4 | |
| PRS25□□ | 133 | THOS 25 104 36 4 | NZ TP IC [CA] 16 125 2 |
| PRS25□□ | 143 | THOS 25 114 36 4 | |
| PRS25□□ | 153 | THOS 25 124 36 4 | NZ TP IC [CA] 16 145 2 |
| PRS25□□ | 163 | THOS 25 134 36 4 | |
| ∩ | ∩ | ∩ | ∩ |
| PRS25□□ | 243 | THOS 25 214 36 4 | NZ TP IC [CA] 16 225 2 |

FLANGE PROCESS AREA

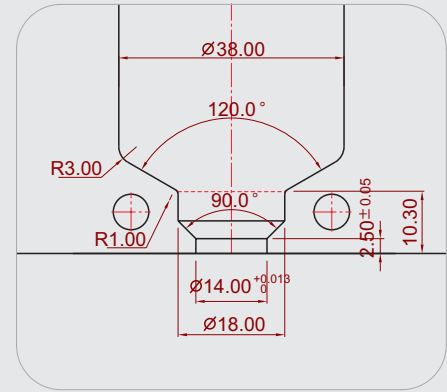


Open System Introduction

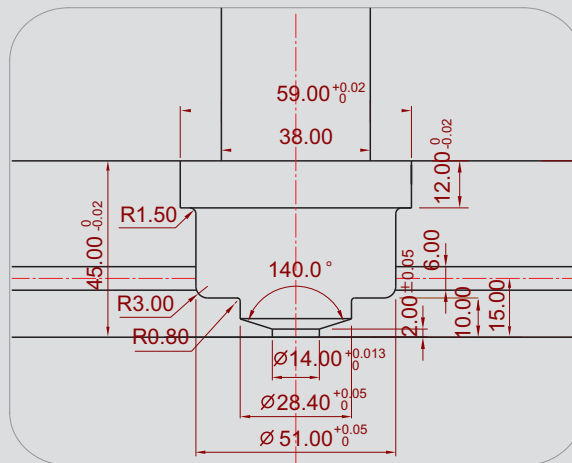
GATE PROCESS AREA



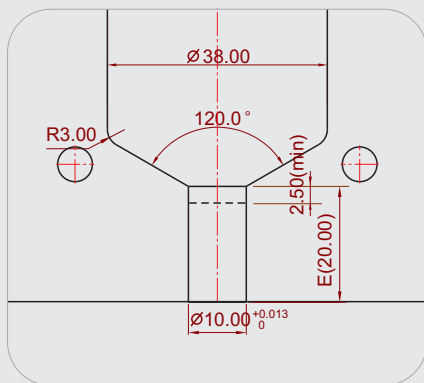
CC / CH



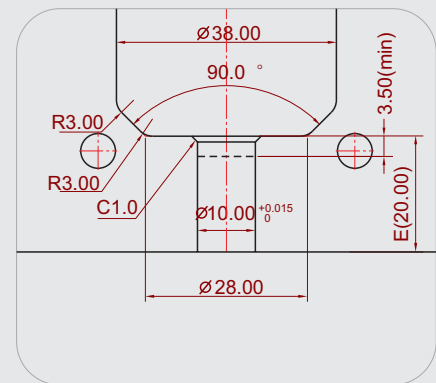
CE



CW



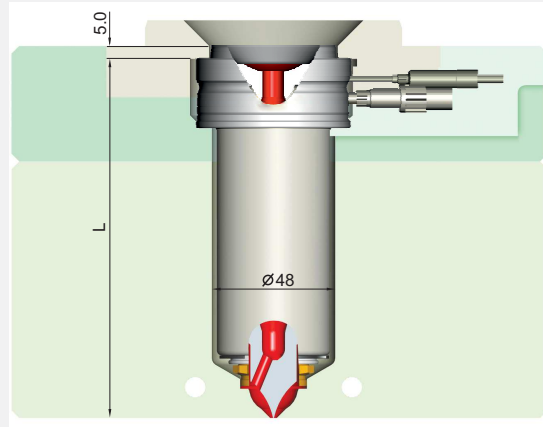
CL



SL

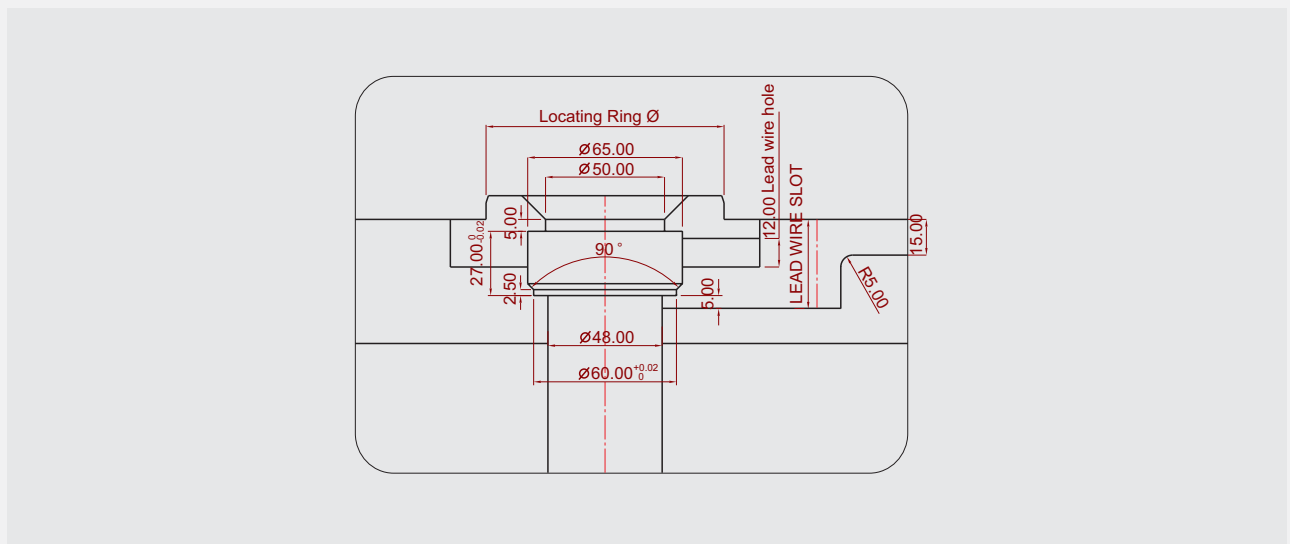
Open System Introduction

PRS35 SERIES



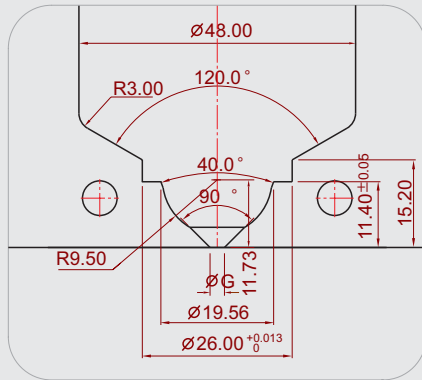
| MODEL | L | HEATER | T/C |
|---------------|----------|-----------------------|-----------------------------|
| PRS35 □□ | 073 | THOS 35 035 36 4 | NZ TP IC [CA] 16 065 2 |
| PRS35 □□ | 083 | THOS 35 045 36 4 | |
| PRS35 □□ | 093 | THOS 35 055 36 4 | NZ TP IC [CA] 16 085 2 |
| PRS35 □□ | 103 | THOS 35 065 36 4 | |
| PRS35 □□ | 113 | THOS 35 075 36 4 | NZ TP IC [CA] 16 105 2 |
| PRS35 □□ | 123 | THOS 35 085 36 4 | |
| PRS35 □□ | 133 | THOS 35 095 36 4 | NZ TP IC [CA] 16 125 2 |
| PRS35 □□ | 143 | THOS 35 105 36 4 | |
| PRS35 □□ | 153 | THOS 35 115 36 4 | NZ TP IC [CA] 16 145 2 |
| PRS35 □□ | 163 | THOS 35 125 36 4 | |
| PRS35 □□ | 173 | THOS 35 135 36 4 | NZ TP IC [CA] 16 165 2 |
| PRS35 □□ | 183 | THOS 35 145 36 4 | |
| ∫ PRS35 □□ | ∫ 263 | ∫ THOS 35 225 36 4 | ∫ NZ TP IC [CA] 16 245 2 |

FLANGE PROCESS AREA

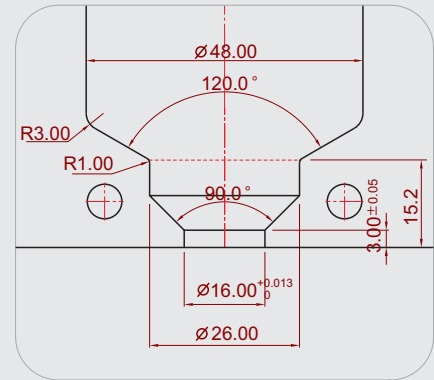


Open System Introduction

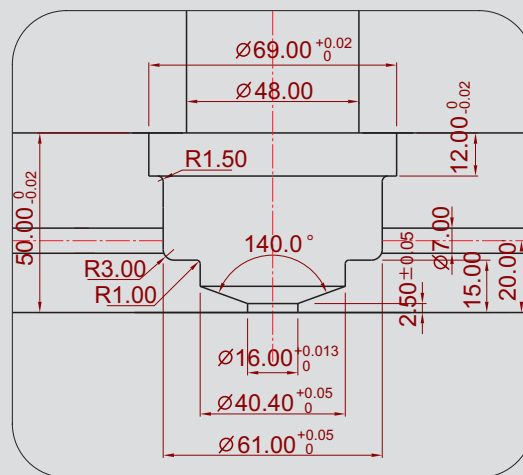
GATE PROCESS AREA



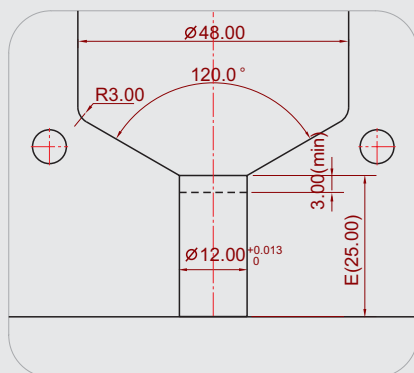
CC / CH



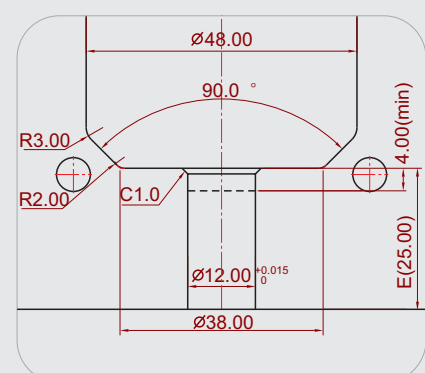
CE



CW



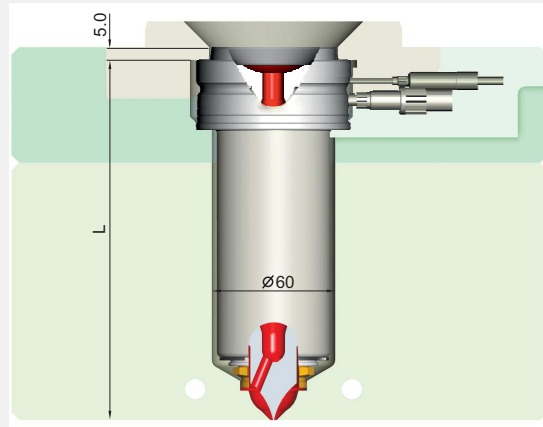
CL



SL

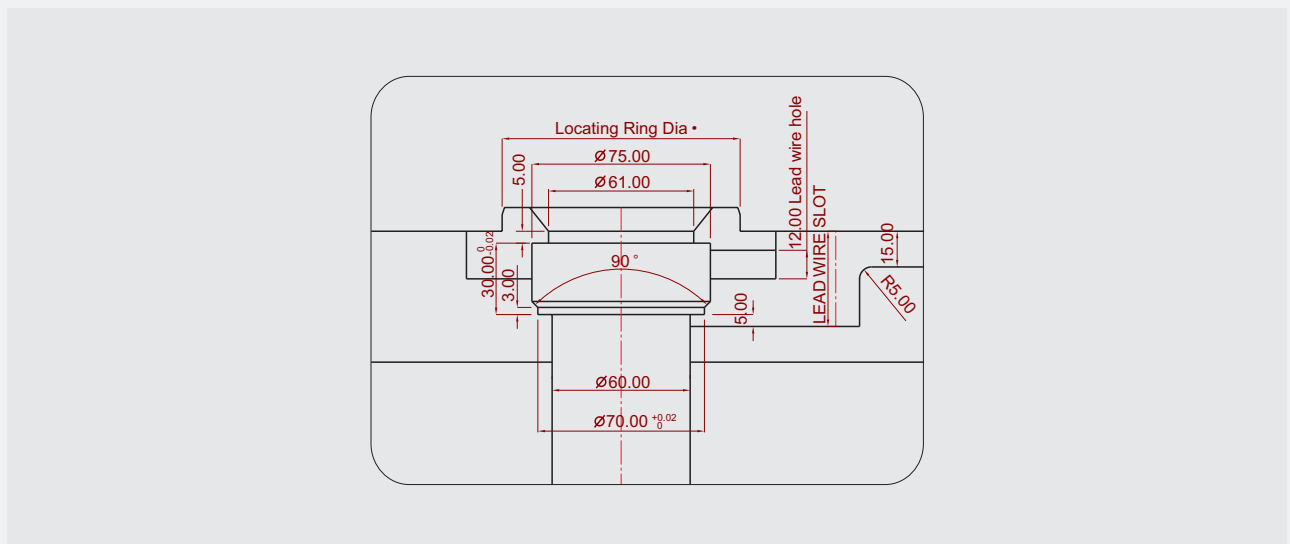
Open System Introduction

PRS45 SERIES



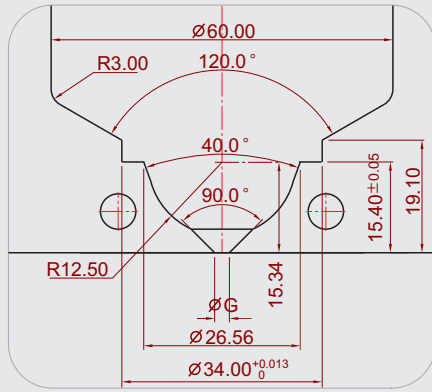
| MODEL | L | HEATER | T/C |
|----------|-----|------------------|------------------------|
| PRS45 □□ | 083 | THOS 45 038 36 4 | NZ TP IC [CA] 16 065 2 |
| PRS45 □□ | 093 | THOS 45 048 36 4 | |
| PRS45 □□ | 103 | THOS 45 058 36 4 | NZ TP IC [CA] 16 085 2 |
| PRS45 □□ | 113 | THOS 45 068 36 4 | |
| PRS45 □□ | 123 | THOS 45 078 36 4 | NZ TP IC [CA] 16 105 2 |
| PRS45 □□ | 133 | THOS 45 088 36 4 | |
| PRS45 □□ | 143 | THOS 45 098 36 4 | NZ TP IC [CA] 16 125 2 |
| PRS45 □□ | 153 | THOS 45 108 36 4 | |
| PRS45 □□ | 163 | THOS 45 118 36 4 | NZ TP IC [CA] 16 145 2 |
| PRS45 □□ | 173 | THOS 45 128 36 4 | |
| PRS45 □□ | 183 | THOS 45 138 36 4 | NZ TP IC [CA] 16 165 2 |
| PRS45 □□ | 193 | THOS 45 148 36 4 | |
| PRS45 □□ | 283 | THOS 45 238 36 4 | NZ TP IC [CA] 16 265 2 |

FLANGE PROCESS AREA

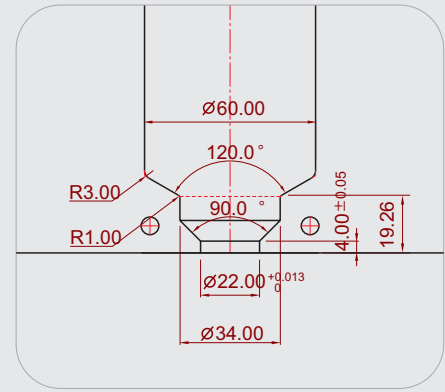


Open System Introduction

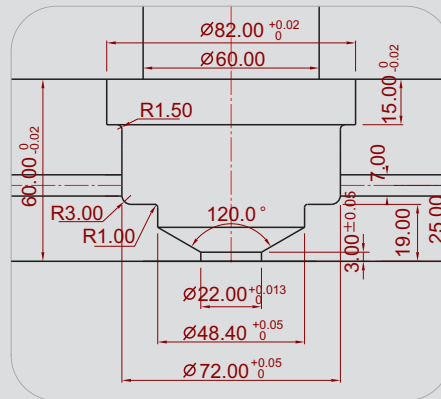
GATE PROCESS AREA



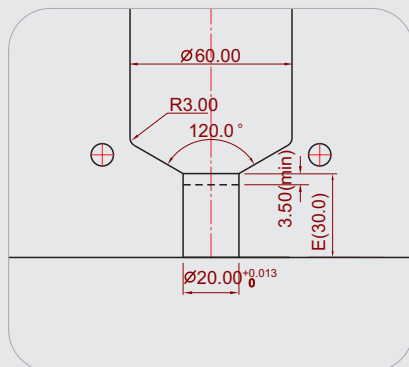
CC / CH



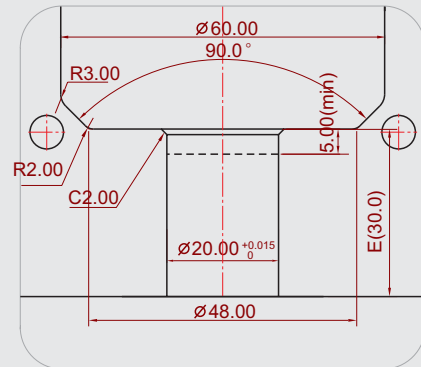
CE



CW



CL



SL



Huelva, 19
03440 - Ibi (Alicante) Spain
Tel.: +34 965 553 199
Fax: +34 966 555 168
info@runner-tech.com
www.runner-tech.com